

*Cougar*  *Brand*



YOUR TRUSTED PARTNER FOR  
INDUSTRIAL COATINGS AND SOLVENTS

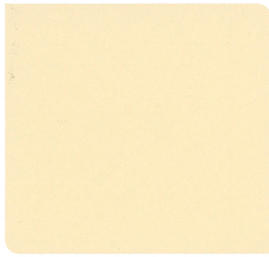
---



# SIGNATURE SERIES



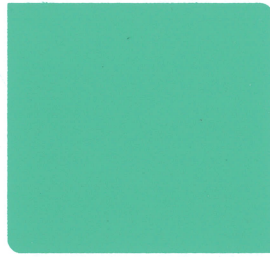
Rose **0449**



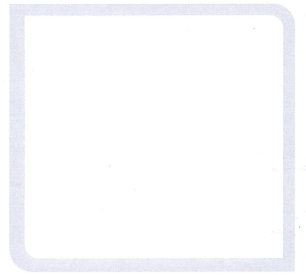
Pearl White **4046**



Sky Blue **0951**



Mint Green **9050**



White **9102**



Orange **0004**



Primrose **4053**



Neptune **0954**



Absinthe **6071**



Ash Grey **9093**



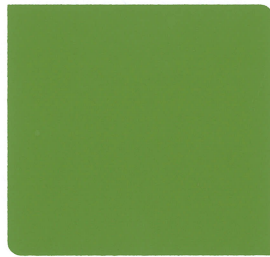
Int. Orange **0601**



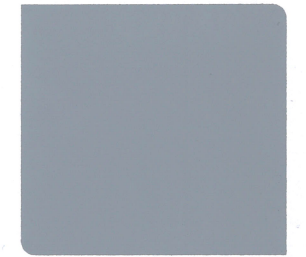
Mayan Yellow **9063**



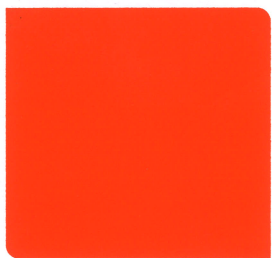
Legend Blue **0105**



Crystal Mint **0222**



Pearl Grey **9006**



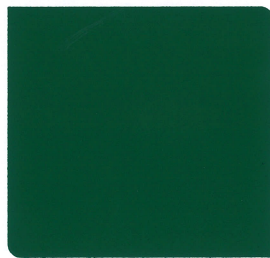
Mandarin Orange **2314**



Canary **0003**



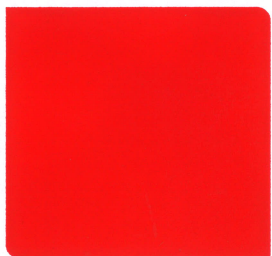
Bright Blue Marine **9008B**



Emerald Green **2315**



Lavender Grey **9095**



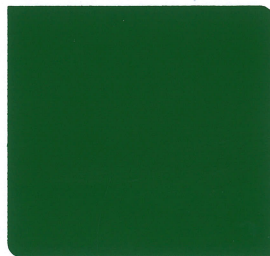
Vermillion **0600**



Chocolate **3045**



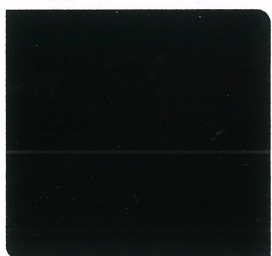
Blue Marines **9008**



Apple Green **0317**



Papier Grey **9097**



Black **9103**



Violet **9076**



Bright Blue **0013**



Grass Green **0206**



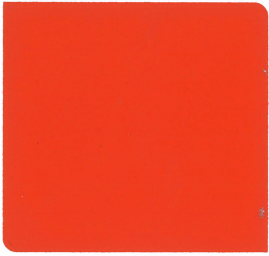
Turf Green **6073**



## PRO SERIES

RAL, BS & Pantone  
standard colours are available.

## MATT ENAMEL PAINTS



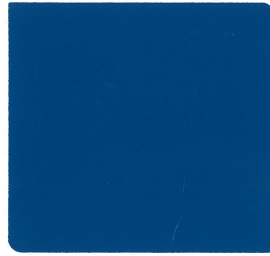
JLG Orange

**A692**



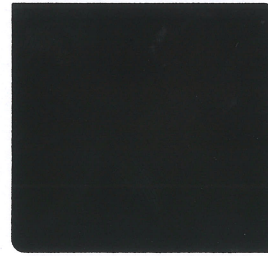
Kobelco Green

**1022**

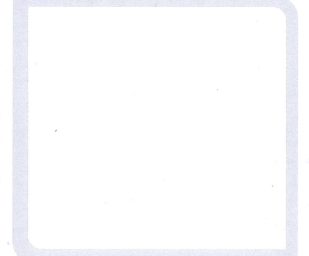


Genie Blue

**0122**

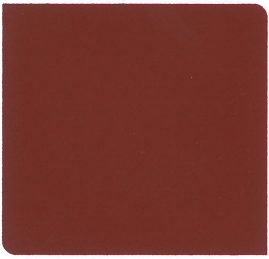


Black

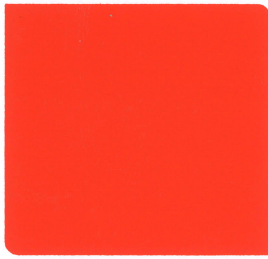


White

## PRIMERS



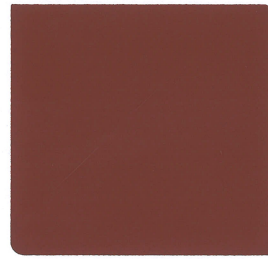
Red Oxide Primer (A)



Orange Primer (A)



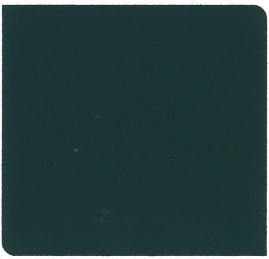
Yellow Primer (A)



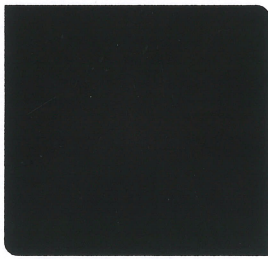
Red Oxide Primer



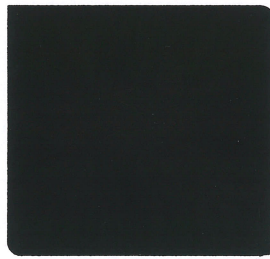
Grey Primer



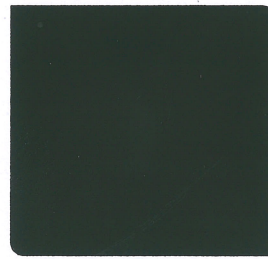
Green Primer



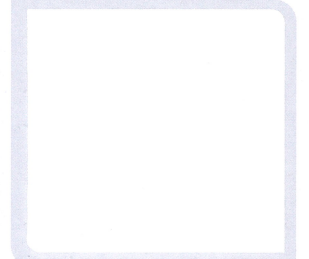
Black Oxide Primer



Etching Primer (Black)

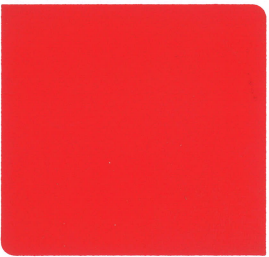


Etching Primer (Dark Green)



Undercoat White

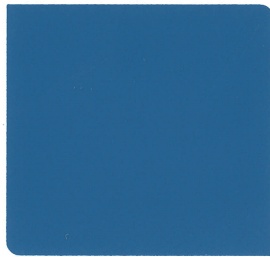
## ROAD LINE PAINTS



Red



Yellow



Blue



Black



White

## METALLIC PAINTS



Aluminium



Galvanized



Cold Galvanized



Bituminous Compound



Bituminous Primer

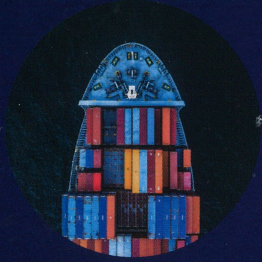
## BITUMINOUS PAINTS

Colours on this brochure are as close to actual paint colours as modern printing techniques will allow.



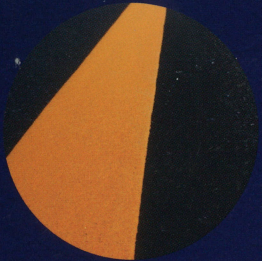
# RANGE OF PRODUCTS

## PROFESSIONAL SERIES CUSTOMIZED COLOUR PAINTS (GLOSSY & MATT)



- RAL, BS & Pantone standard colours available
- Faster drying time
- Suitable for industrial & decorative uses
- Good coverage & ease of application
- Smooth and attractive finish

## ROAD LINE PAINTS



- Good hardness & wear resistance
- Fast drying time
- Excellent weathering resistance
- Good adhesion on bitumen & concrete substrates
- Uniform matt finish

## SIGNATURE SERIES ALKYD ENAMEL PAINTS (GLOSSY & MATT)



- Suitable for industrial & decorative uses
- Good coverage & ease of application
- Good glossy & matt finish

## RED OXIDE PRIMERS



- Economical primer
- Fast drying time
- Ease of application
- Good adhesion on ferrous metal substrates
- Good corrosion resistance

## METALLIC & COLD GALVANIZED PAINTS



- Good lustre and brightness
- Fast drying time
- Ease of application
- Good adhesion on most ferrous metal and non ferrous metal substrates

Loh & Sons Paint Co (S) Pte Ltd has over 25 years of history in the coatings business and we support the construction and marine industries with cost effective paints, primers and solvent products through our flagship Cougar Brand. Through the years we have successfully transformed ourselves from a backyard manufacturer to a leading solutions provider for industrial paints and thinners.

## BITUMINOUS COMPOUNDS & PRIMERS



- Specifically designed for sealing cracks
- Provides excellent corrosion & waterproofing protection
- Suitable for metal & concrete substrates
- Good resistance to seawater immersion

## PAINT REMOVERS



- Heavy-duty paint remover
- Removes most types of coatings
- Ease of application
- Recommended for use on metal substrates
- Suitable for industrial & marine uses

## ALKYD & ETCHING PRIMERS



- Fast drying time
- Ease of application
- Good adhesion on most metal substrates
- Smooth matt finish

## THINNERS & SOLVENTS



- Specially formulated solvent blend recommended for thinning of paints, lacquers & cleaning of painting tools
- Suitable for cleaning of substrates prior to painting
- Imparts fast drying properties
- Types of solvents: Kerosene, Turpentine, Wood preservative oil, Industrial alcohol, Spirits, Slow 2K, etc.

## POLYURETHANE & EPOXY PAINTS



- Excellent film hardness
- Fast drying time
- Good resistance to chemical splashes
- Good scratch resistance

Marketed by: **Loh & Sons Paint Co (S) Pte Ltd**  
A MEMBER OF NATURAL COOL HOLDINGS LIMITED

[www.cougarpaint.com](http://www.cougarpaint.com)

Tel: +65 6264 1248 | Fax: +65 6264 2069 | Email: [sales.cp@cougarpaint.com](mailto:sales.cp@cougarpaint.com)